



# MORNING MANTRA

WHAT'S RISING

BULLS

BEARS

WHAT'S FALLING

Daily Derivatives & Market Report

JAN 29, 2025



Indian equity benchmarks continued their pre-budget rally for yet another day led by healthy buying in IT sector's stocks. After making positive start, indices continued their gaining momentum till the end of the session amid value buying by investors.

Some of the important factors for the markets:

Traders eyeing tax reforms in upcoming budget: Union Finance Minister Nirmala Sitharaman will present the Union Budget 2025-26 on February 1. Most taxpayers are very hopeful of major income tax changes. Some of these expectations include changes in income tax slabs under the new tax regime, introducing more benefits in old regime, and a hike in various exemptions and deductions.

U.S. Fed decision: Federal Reserve's first interest-rate decision in 2025 due later in the day. The Fed is widely expected to leave interest rates unchanged.

RBI to conduct USD/INR buy-sell swap auction: The Reserve Bank of India (RBI) has said that it will conduct a USD/INR buy-sell swap auction of \$5 billion (about Rs 43,000 crore) for a tenor of 6 months on January 31, 2025 as part of its over Rs 1.5 lakh crore liquidity injection into the banking system.

Global front: European markets were trading mostly in green as global markets recovered from a tech selloff sparked by concerns over the emergence of a low-cost Chinese AI model. Investors also digested a slew of corporate earnings results. Japan stock market -- Nikkei 225 Index ended higher amid US Fed's interest rate decision later in the day.

# MARKET SELFIE



## MARKET SUMMARY

Domestic Indices	Close	Points	% Change
SENSEX	76532.96	631.55	0.83
NIFTY	23163.10	205.85	0.90
MIDCAP	42366.13	1047.47	2.54
SMLCAP	49050.57	1558.09	3.28
BSEFMC	20040.51	-61.23	-0.30
HEALTHCARE	41149.54	885.32	2.20
AUTO	50796.96	747.06	1.49
POWER	6352.24	132.53	2.13
REALTY	6891.72	207.54	3.10
BSE IT	42061.56	1085.44	2.65
BANKEX	55891.79	375.42	0.68
OIL GAS	24509.38	132.69	0.54
METAL	28069.46	535.66	1.95
INDIA VIX	18.64	0.44	2.42

## ADVANCE - DECLINE

Index	Advance	Decline	Unchanged
NSE	2543	395	29
BSE	2977	1011	94

## MARKET TURNOVER (₹ in Crs)

Segment	Current	Previous	Net %
BSE CASH	5175	6401	(19)
NSE CASH	91471	115496	(21)
NSE F&O	378131	439919	(14)

## KEY INDICES RATIOS

INDEX	P/E	P/B	Dividend Yield
NIFTY	21.06	3.45	1.38
SENSEX	21.79	3.94	1.19

# KEY NUMBERS TRACKER



## FII – DII ACTIVITY IN CASH SEGMENT (₹ in Crs)

FII-DII*	Buy	Sell	Net
DII	12871	11079	1793
FII	7644	10231	(2586)

Note: FPI & DII Figures are provisional

## FII ACTIVITY IN DERIVATIVES SEGMENT (₹ in Crs)

FII	Buy	Sell	Net
Index Futures	7536.88	7371.10	166
Index Options	1238443.26	1216850.16	21593
Stock Futures	96099.99	93231.91	2868
Stock Options	89504.00	85158.29	4346

## PUT-CALL RATIO

Index	Current	Previous
NIFTY	1.06	0.95
BANK NIFTY	0.79	0.75

## DOLLAR INDEX

Dollar Index	Current	Previous	% Change
DXY	108.11	107.91	0.19

## 10-YEARS G-SEC YIELD

Country	Current	Previous	% Change
INDIA	6.686	6.681	0.07
USA	4.532	4.549	-0.37

## KEY COMMODITIES TRACKER (in \$)

Commodity	Current	Change Points	% Change
Gold	2760.56	-1.82	-0.06
Silver	30.41	0.03	0.11
Crude-Oil	73.09	-0.64	-0.87
Brent-Crude	76.79	-0.70	-0.90

# CURRENCY FUTURES & INDEX TRENDS TRACKER



## CURRENCY FUTURES

Expiry	Close	Change Points	% Change
25 FEB-24 USD-INR	86.71	-0.04	-0.04
25 FEB-24 EUR-INR	90.29	-0.22	-0.25
25 FEB-24 GBP-INR	107.63	-0.11	-0.10
25 FEB-24 JPY- INR	56.40	-0.48	-0.84

## INDICES – SUPPORT-RESISTANCE-PIVOT LEVELS

Index	Close	S2	S1	Pivot	R1	R2
NIFTY	23163	22901	23032	23108	23239	23315
SENSEX	76533	75746	76139	76370	76763	76993
NIFTY FUTURES	23148	22877	23013	23099	23235	23321
BANK NIFTY	49166	48722	48944	49072	49294	49422
CNX IT	42915	41728	42321	42645	43238	43562
CNX MIDCAP	52719	51223	51971	52365	53113	53506
CNX SMALLCAP	16541	15824	16182	16372	16730	16919
INDIA VIX	18.64	16.59	17.62	18.31	19.34	20.03

## INDEX TREND ANALYSIS

Index	Daily	Weekly	Monthly
NIFTY	NEUTRAL	SELL	NEUTRAL
SENSEX	NEUTRAL	SELL	NEUTRAL
NIFTY FUTURES	NEUTRAL	SELL	NEUTRAL
BANK NIFTY	NEUTRAL	SELL	NEUTRAL
CNX IT	NEUTRAL	Buy	Buy
CNX MIDCAP	NEUTRAL	SELL	Buy
CNX SMALLCAP	SELL	SELL	Buy
INDIA VIX	Buy	Buy	SELL

## SECURITIES BAN IN F&O TRADES FOR 30-01-2025

	NIL
--	-----



# TECHNICAL VIEWS



## NIFTY

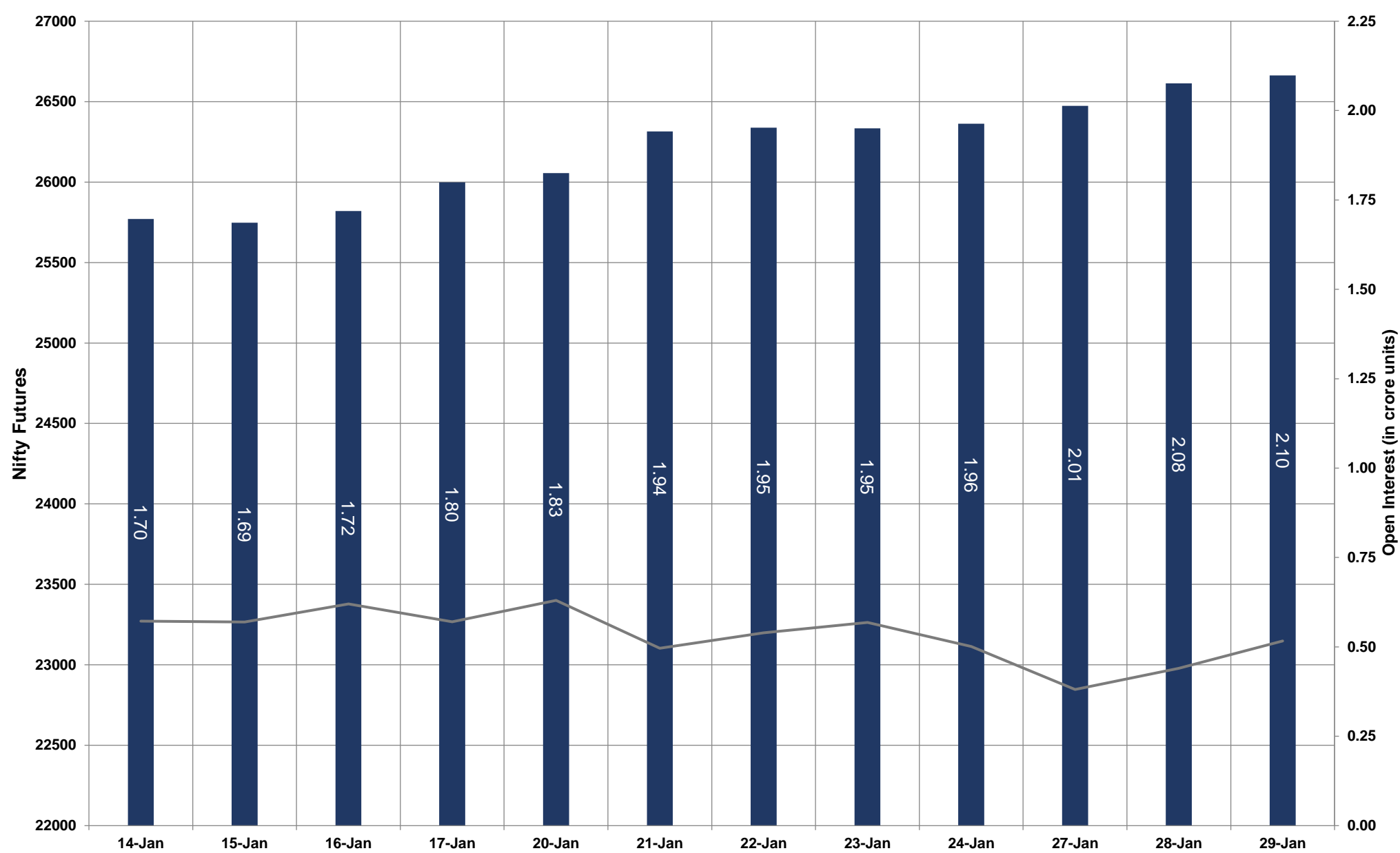


- Nifty Cash = **22957.25 (0.56%)**
- Resistance levels = **23310** and **23360**
- Support levels = **22820** and **22650**

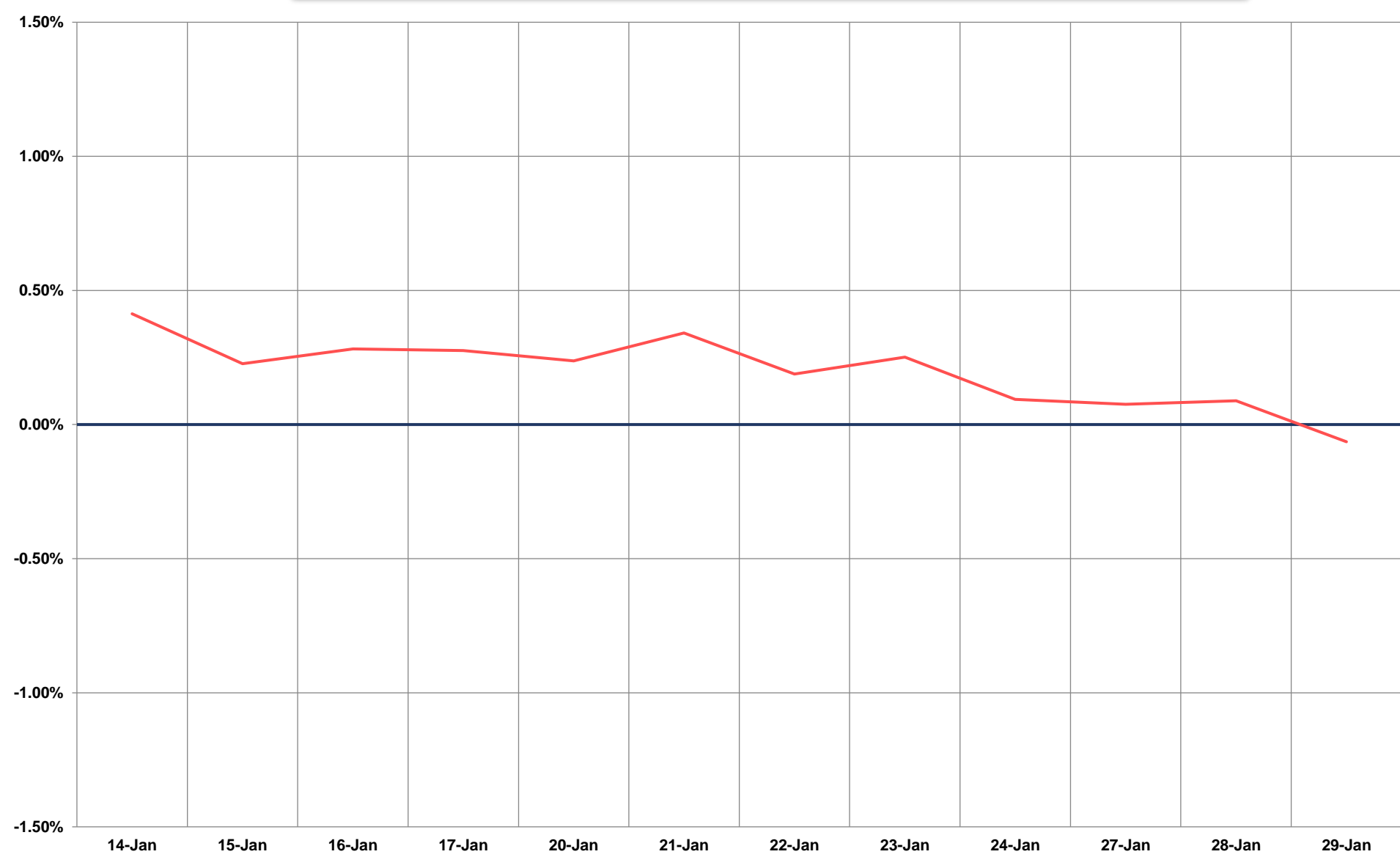
# TECHNICAL VIEWS



## NIFTY FUTURES



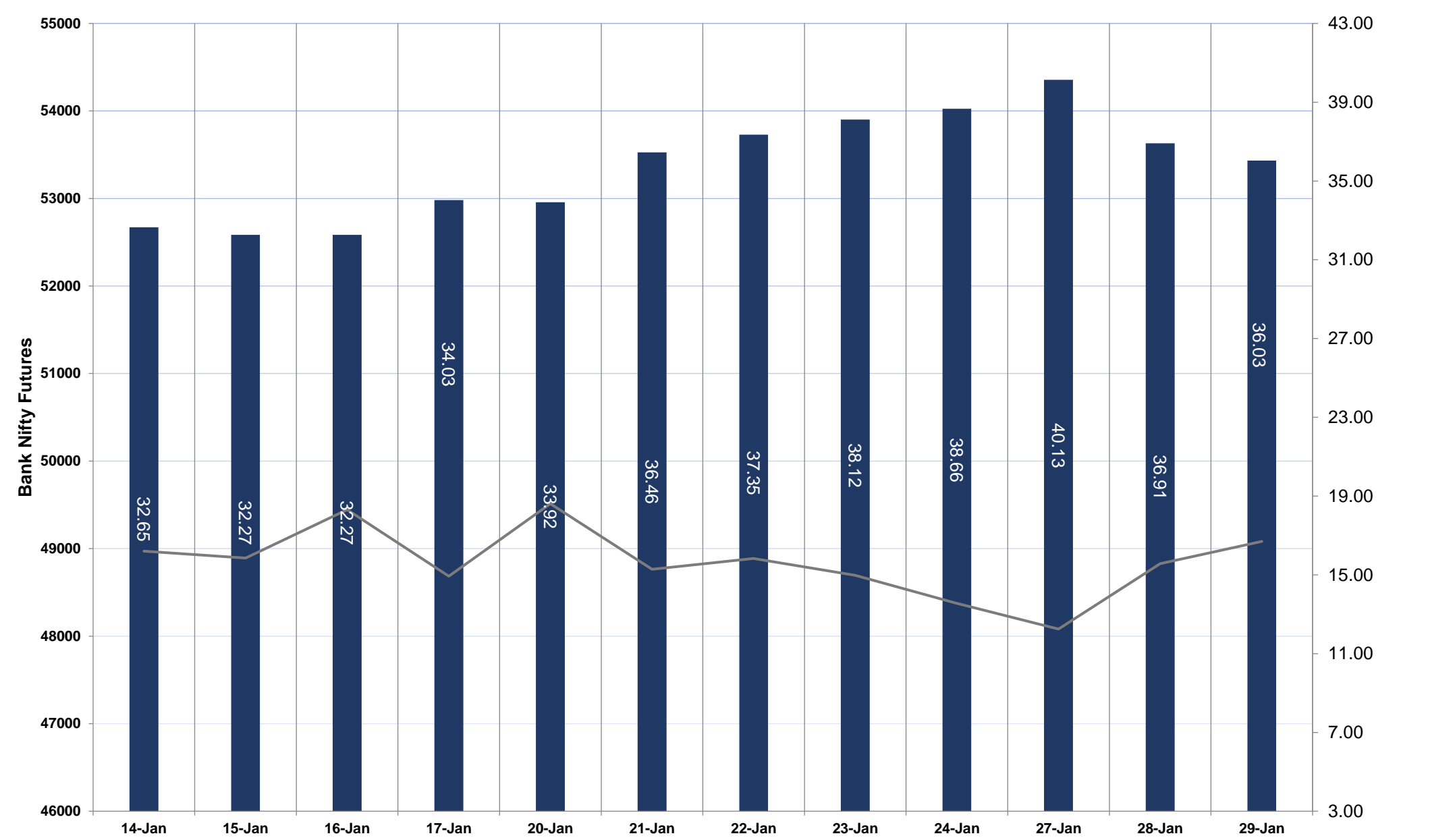
## SPREAD: FUTURE & SPOT



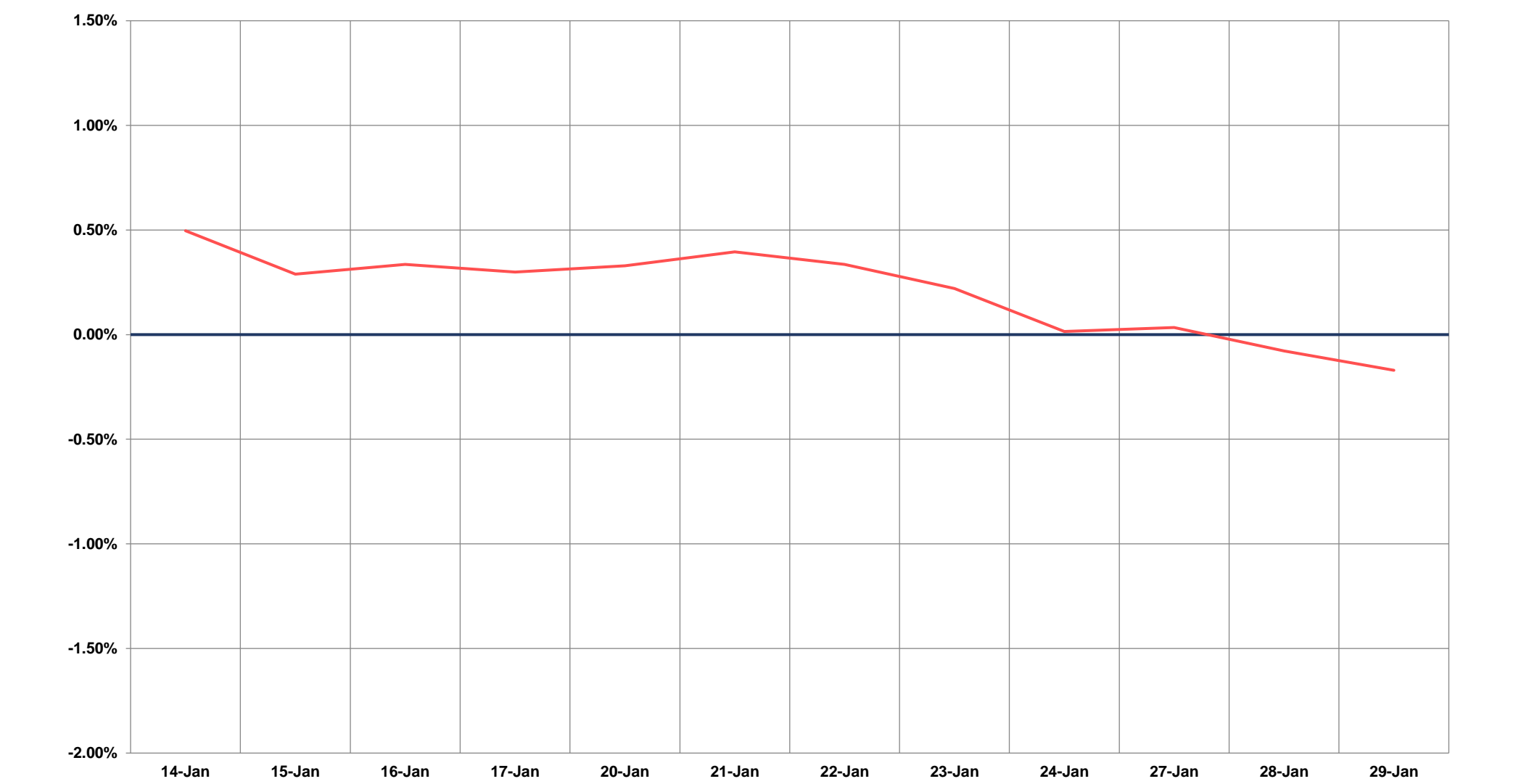
# TECHNICAL VIEWS



## BANK NIFTY FUTURES



## SPREAD: FUTURE & SPOT

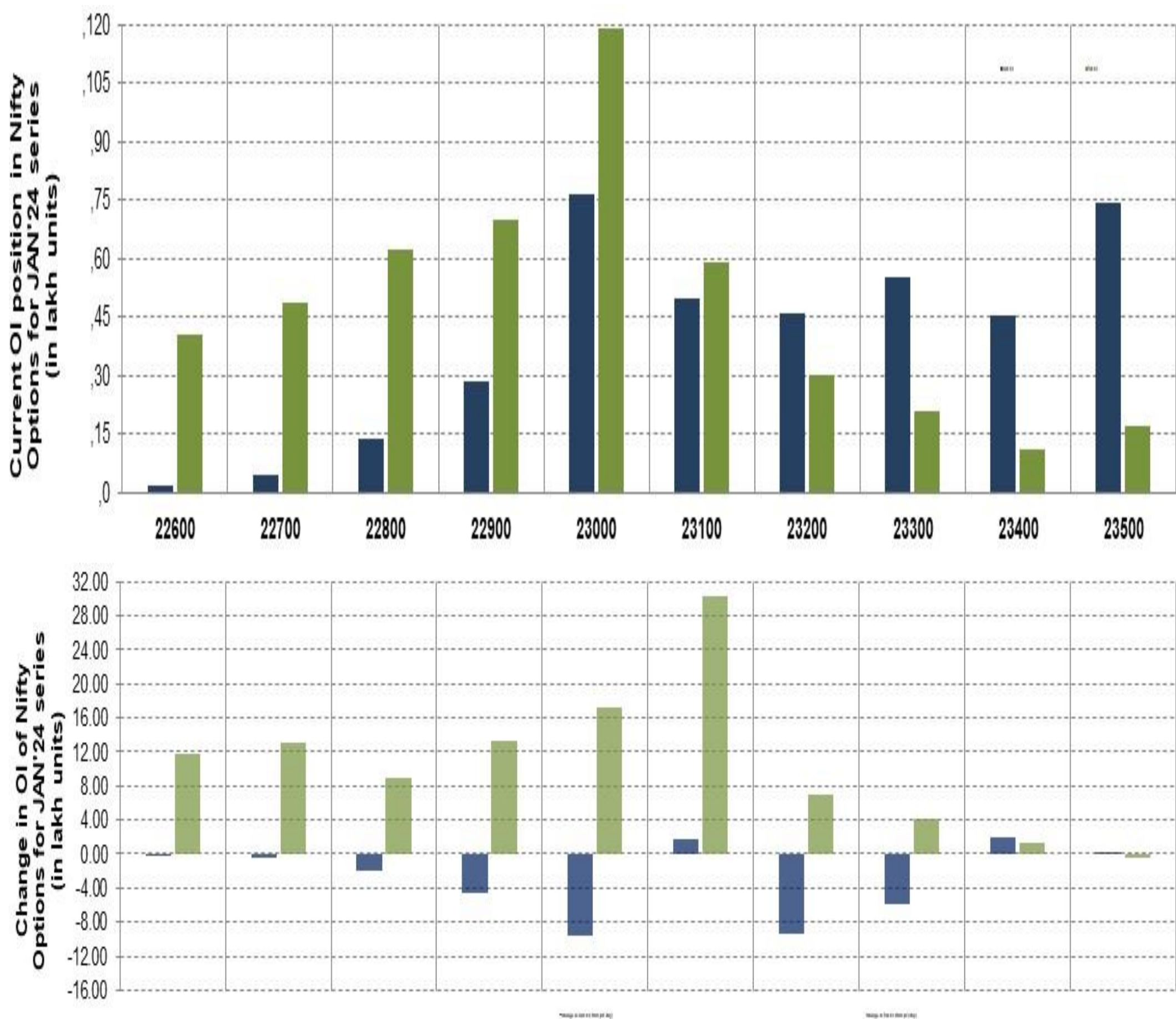




# TECHNICAL VIEWS



## NIFTY OPTIONS



- **Most Active Nifty Call** with an addition of 0.19 million in Open Interests is **Strike Price of 23400**
- **Most Active Nifty Put** with an addition of 3.02 millions in Open Interests is **Strike Price of 23100**
- **Maximum Open Interest an outstanding** was 7.65 millions for Calls at **Strike Price of 23000**
- **Maximum Open Interest an outstanding** was 11.91 millions for puts at **Strike Price of 23000**

# Disclaimer



The Information provided by SMS or in newsletter or in any document has been prepared by Shah Investor's Home Ltd (SIHL). The Information provided by SMS or in newsletter does not constitute an offer or solicitation for the purchase or sale of any financial instrument or as an official confirmation of any transaction. The information contained herein is from publicly available data or other sources believed to be reliable, but we do not represent that it is accurate or complete and it should not be relied on as such. SIHL or any of its affiliates/ group companies shall not be in any way responsible for any loss or damage that may arise to any person from any error in the information contained in this report or SMS. This Information provided by SMS, reports or in newsletter is provided for assistance only and is not intended to be and must not alone be taken as the basis for an investment decision. The user assumes the entire risk of any use made of this information. Each recipient of this Information provided by SMS, report or in newsletter should make such investigation as it deems necessary to arrive at an independent evaluation of an investment in the securities of companies referred to in this information provided by SMS, report or in newsletter (including the merits and risks involved), and should consult his own advisors to determine the merits and risks of such investment. The investment discussed or views expressed may not be suitable for all investors. This information is strictly confidential and is being furnished to you solely for your information.

The information should not be reproduced or redistributed or passed on directly or indirectly in any form to any other person or published, copied, in whole or in part, for any purpose. The information provided by report or SMS is not directed or intended for distribution to, or use by, any person or entity who is a citizen or resident of or located in any locality, state, country or other jurisdiction, where such distribution, publication, availability or use would be contrary to law, regulation or which would subject SIHL and affiliates/ group companies to any registration or licensing requirements within such jurisdiction. The distribution of this Information provided by SMS or in newsletter in certain jurisdictions may be restricted by law, and persons in whose possession this Information provided by SMS or in newsletter comes, should inform themselves about and observe, any such restrictions. The information given or Information provided by SMS, report or in newsletter is as of the date of the issue date of report or the date on which SMS provided and there can be no assurance that future results or events will be consistent with this information. This information is subject to change without any prior notice. SIHL reserves the right to make modifications and alterations to this statement as may be required from time to time. However, SIHL is under no obligation to update or keep the information current.

Nevertheless, SIHL is committed to providing independent and transparent recommendation to its client and would be happy to provide any information in response to specific client queries. Neither SIHL nor any of its affiliates, group companies, directors, employees, agents or representatives shall be liable for any damages whether direct, indirect, special or consequential including lost revenue or lost profits that may arise from or in connection with the use of the information. Past performance is not necessarily a guide to future performance. The disclosures of interest statements incorporated in the Information provided by SMS, report or in newsletter are provided solely to enhance the transparency and should not be treated as endorsement of the views expressed in the report. The analyst for this report certifies that all of the views expressed in this report accurately reflect his or her personal views about the subject company or companies and its or their securities, and no part of his or her compensation was, is or will be, directly or indirectly related to specific recommendations or views expressed in this report.